



MENTONE
ALUFORM
SYSTEM(INDIA)
PVT. LTD.



मेंटॉन अल्युफॉर्म सिस्टम प्रा. लि

WHO WE ARE

Mentone Aluform System (India) Pvt Ltd is a pioneering force in the aluminum formwork and services industry. With a legacy of excellence spanning over 35 years, our company has redefined the standards of precision engineering and fabrication.

Our commitment to innovation and quality has propelled Mentone to the forefront of the industry. We take pride in offering cutting-edge solutions that meet the evolving needs of modern construction projects. From conceptualization to execution, our team is dedicated to delivering superior results that exceed expectations.

At Mentone, we believe in building lasting relationships with our clients. Our extensive network spans across 12 cities in India, catering to a diverse clientele with over 2000 satisfied customers worldwide. Our unwavering focus on customer satisfaction has earned us a reputation as a trusted partner in the construction industry.

As a testament to our expertise, Mentone is recognized as a leading brand in high-grade concrete spacers. Our products are synonymous with quality, reliability, and durability, making us the preferred choice for discerning customers.

Driven by a passion for excellence, Mentone Aluform System (India) Pvt Ltd continues to set new benchmarks in the industry. With a relentless pursuit of perfection, we are poised to shape the future of construction through innovation and integrity

MENTONE

EXCELLENCE WITH SENSE

CORE VALUES



SAFETY



EMPATHY



SOCIAL
RESPONSIBILITY



ON-TIME

WHAT SETS US APART

At Mentone Aluform System (India) Pvt Ltd, we pride ourselves on being more than just a supplier; we are your strategic partner in construction excellence. Here's how we stand out:



Innovative Solutions : We are at the forefront of innovation, constantly developing cutting-edge solutions that redefine industry standards. Our commitment to research and development ensures that we offer the latest in aluminum formwork technology, providing you with a competitive edge.

Customization : We understand that every project is unique, which is why we offer customized solutions tailored to your specific needs. Our team works closely with you to design and deliver solutions that align perfectly with your project requirements, ensuring maximum efficiency and cost-effectiveness.

End-to-End Services : From design and planning to installation and maintenance, we provide comprehensive services that cover the entire project lifecycle. Our holistic approach ensures seamless integration and efficient project management, saving you time and resources.

Quality Assurance : Quality is at the heart of everything we do. Our products undergo rigorous testing to ensure they meet the highest standards of quality, durability, and safety. You can trust Mentone for reliable and long-lasting solutions that deliver exceptional performance.

Customer-Centric Approach : We prioritize customer satisfaction above all else. Our dedicated team is committed to understanding your needs and providing personalized support every step of the way. With Mentone, you can expect a partnership built on trust, transparency, and integrity.

Global Reach : While we are proud of our strong presence in India, our reach extends globally. With over 2000 satisfied customers worldwide, we have proven our ability to deliver excellence on a global scale.

Industry Leadership : With over 35 years of experience in heavy engineering and fabrication, our director brings a wealth of knowledge and expertise to the table. Mentone is not just a company; it is a symbol of leadership and reliability in the construction industry.

When you choose **Mentone Aluform System (India) Pvt Ltd**, you are choosing a partner who is committed to your success. Experience the Mentone difference and elevate your construction projects to new heights.

TERMINOLOGY AND BUILDING COMPONENTS

Raw Material used for Aluminum Formwork is **Alloy AA 6061 T6 Extrusion**: This type of aluminum alloy extrusion that has been tempered to achieve good hardness and tensile strength, suitable for withstanding the lateral compressive loads exerted by concrete.

Aluminum Alloy AA 5052 H32 Sheet: This is another type of aluminum alloy, used when customization of the formwork is required. It has good weldability with AA 6061 T6 extrusions when the proper filler material is used.

MIG Welding: This stands for Metal Inert Gas welding, a process where an electric arc forms between a consumable wire electrode and the workpiece metals, while an inert gas (in this case, 99% pure argon) is used to shield the weld area from atmospheric contamination.

Friction Stir Welding (FSW): A welding process used to join two pieces of material, particularly effective for aluminum alloys, known for its speed and cost-efficiency.

Mainly Following types of forms are being produced by MENTONE Aluform

Wall/Vertical Forms and Deck/Slab Forms: Different types of formwork systems used in construction. Wall forms are used to create vertical structures, while deck/slab forms are used for horizontal surfaces such as floors or ceilings.

Monolithic Formwork: A combination of wall and deck forms used to cast multiple components of a construction project in a single casting, including walls, slabs, beams, balconies, etc.

Top or Filler Panels: Additional panels added on top of wall panels to adjust to varying floor-to-ceiling heights.

Soffit Panels (SL): Panels that connect the inner wall panels to the deck panels.

Inside Corners (IC): Panels used to create perpendicular walls at right angles by connecting two wall panels.

Outside Corners: Panels used to assist in fixing beam bottoms.

Rocker: Used at the bottom of wall forms to ensure level alignment, especially on uneven ground at the construction site.

Kicker Forms: Placed at the top of filler or top panels to serve as a reference point for upper floors.

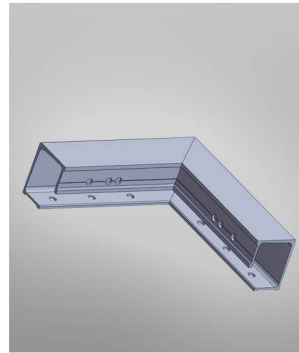


STANDARD ACCESSORIES

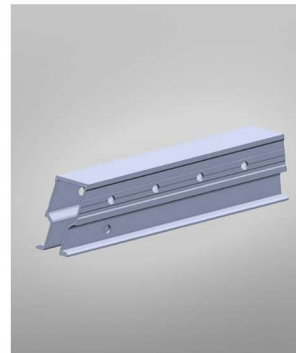
The formwork system will work satisfactorily only if it is supported by accessories. The most common accessories are waler clamps, pin/wedge combination, wall ties, tie rods and anchor/wing nut combination, hammers, hole bars, form stripping/aligning tool, wall tie puller, scaffolding brackets, bks Patti, props, adjustable bases and suitable pipe extensions, push/pull arrangement. Other accessories that are optional is window/door braces, slab cut-outs and MEP cut-outs and sleeves.



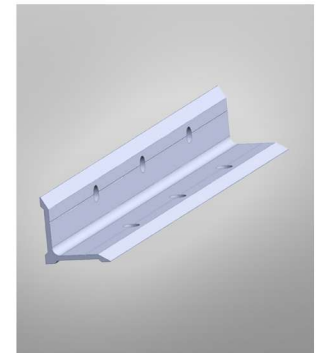
PRODUCT RANGE



**SLAB INNER
CORNER**



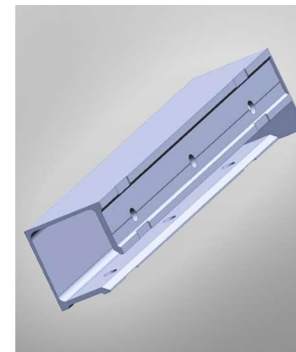
END BEAM



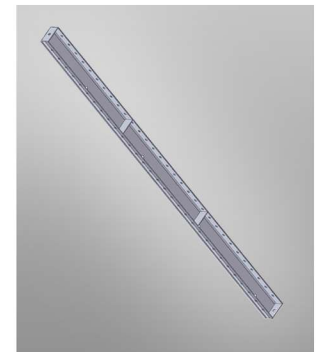
**EXTERNAL CORNER
ANGLE**



DECK PANEL



WALL CORNER



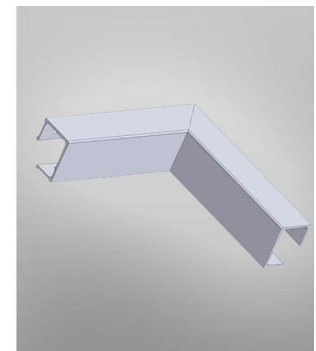
KICKER PANEL



BEAM BOTTOM



WALL PANEL

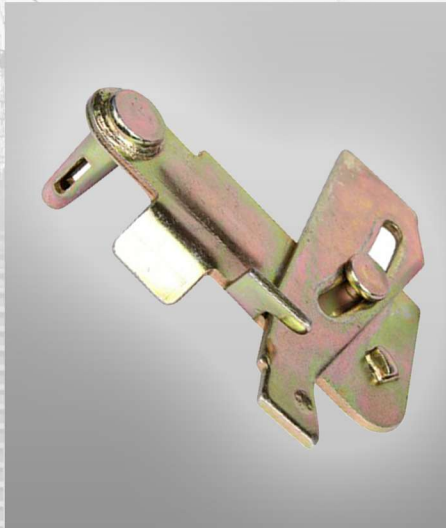


**SLAB INNER
CORNER**

ACCESSORIES & TOOLS



ADJ. PROP



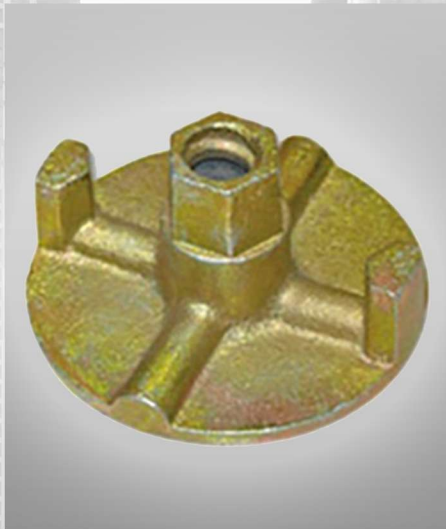
GERMAN CLAMP



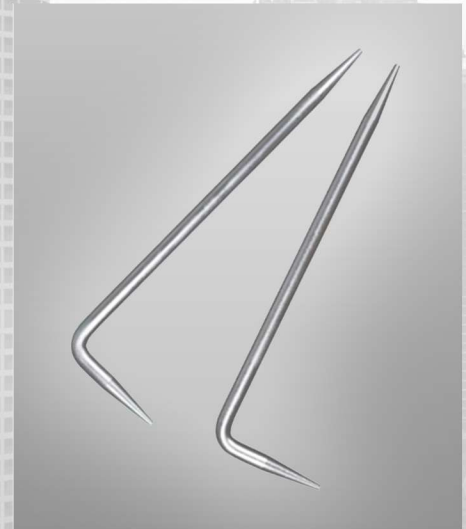
PVC CONE



PANEL PULLER



ANCHOR NUT



HOLE BARI



WEDGE PIN STUB



WALL TIE



TIE ROD



PVC SLEEVE



BEAM BAR



WALL BRACKET



SHORING BASE



WHY ALUMINUM FORMWOTK ?

A. DURABILITY

Aluminum formwork is known for its durability, allowing for multiple reuses without compromising on quality or structural integrity.

B. LIGHTWEIGHT:

Compared to traditional formwork materials like wood or steel, aluminum formwork is lightweight, making it easier to handle and transport on-site.

C. EFFICIENCY

Aluminum formwork systems are designed for quick assembly and disassembly, leading to faster construction cycles and reduced labor costs.

D. PRECISION

The precise engineering of aluminum formwork ensures accurate dimensions and smooth finishes, resulting in high-quality concrete structures.

E. VERSATILITY

Aluminum formwork can be used for a wide range of concrete structures, including walls, slabs, columns, beams, stairs, and more, offering versatility in construction projects.

F. COST-EFFECTIVE

While the initial investment in aluminum formwork may be higher than traditional formwork, its reusability and efficiency can lead to significant cost savings over multiple projects.

G. ENVIRONMENTAL BENEFITS

Aluminum is a sustainable and recyclable material, making aluminum formwork an environmentally friendly choice for construction projects.

H. SAFETY

The lightweight nature of aluminum formwork reduces the risk of accidents and injuries during handling and installation, enhancing overall on-site safety.

I. QUALITY CONTROL

The use of aluminum formwork allows for better quality control during the construction process, resulting in fewer defects and higher-quality concrete structures.

J. SPEED OF CONSTRUCTION

10. Aluminum formwork systems are designed to streamline the construction process, enabling faster completion of projects compared to traditional formwork methods.





COMPARISON BETWEEN DIFFERENT CONSTRUCTION METHODS

System Attributes	Formwork Category			
	Traditional Formwork	Hand Held Formwork	Tunnel Formwork	Mentone Aluform Systems
Crane not required		✓		✓
Concrete columns and beams can be casted together	✓	✓		✓
Suitable for single or two storey mass housing and high rise buildings			✓	✓
Skilled labor not required		✓		✓
Allows to pour wall, slab, beam, column and staircase in single concrete pour			✓	✓
Formwork system suitable to all designs				✓
Environmentally friendly - no residual and burning waste				✓
Respects all architectural and structural requirements of the client, without modifications.	✓	✓		✓
Able to form all concrete features of a construction projects.	✓			✓

Specification	Aluminum AA6061-T6		
Mechanical properties of Material	Characteristics	Aluminum Alloy AA6061-T6	Unit
	Density	2.7	gm/cc ³
	Allowable bending stress	1,250	kg/cm ³
	Young's modulus	69000	kg/cm ³
Standard Panel Sizes	Wall panel	600 x 2400 mm (height) x 65 thk	
	Slab panel	600 x 1200 mm x 65 thk	



AHMEDABAD

Shed No.28 Shyamved Estate Nr. Nana Chiloda Circle S.P. Ring Road , Ahmedabad - 382 330
+91 7410003785 / +91 7410003781

SURAT

208, Sharda Faliya, Near Fire Station, Gauravpath Rode, Palanpur Gam, Surat, Gujrat - 395009
Contact No - +917410003789 / +917410003785

NASHIK

Shraddha Vihar Colony Wadala Shivar Sr No 104/1/7 Plot No. 7, Indiranagar Nashik - 422009
Contact No - +91 7410003793 / +917410003794

MUMBAI

Gala No. 2 , Thakur Compound , New Ganesh Nagar { Sathe Nagar } Digha , New Mumbai- 400708
Contact No - +917410003780 / +917410003781

PUNE

S.No. 99 , Off.No - 1 , Lokesh Apartment , Cts No - 6687 & 6688 , Pimpri Waghire, Yashwant Nagar, Pimpri, Pune - 411018

HYDERABAD

Door No. 8-8-280/B, Flat No.- 126/Nproad No.10 Kormanghat, Saroojnagar, Hyderabad - 500 035
Contact No - +917410007019 / +917410003777

AURANGABAD

Gat No.55 Aman Complex, Near Mit College , Beedby Pass Road, Sataraparisar, Aurangabad - 431 001
Contact No - +917410003791 / +917410003792

BANGALORE

Raghunathreddy , Site No.13, Jigani, Near Yallamma Temple Road, Balajinagar Main Gate Opposite , Anekal Taluk, Bangalore -560 105
Contact No - +917410003861 / +917410003779

www.mentonealuform.com

Reg. office:- Shop No 6, Madhulika Apparent, Pimpri, Pune 411018

Factory Address: GT No. 1697, At Post Shelpimpalgaon , Chakan Shikarpur Road , Tal Khed , Pune 410501
7410003777 / 9371018816 / 8956477377 / 7410037119

info@mentonealuform.com , sales @mentonealuform.com , aluform.ind@gmail.com

MENTONE ALUFORM

मेंटॉन अल्युफॉर्म सिस्टम प्रा. लि
www.mentonealuform.com

